



6 Grosvenor Mews Grosvenor Road, Epsom, KT18 6JL
Guide price £700,000

 3  3  1  C

OFFERED WITH NO ONWARD CHAIN!

A beautifully presented detached family home, tucked away in a quiet and private position at the rear of this exclusive 2006 development, situated on a private road with minimal passing traffic, in the highly sought-after village of Langley Vale, moments from the world-famous Epsom Downs.

This modern property offers bright, spacious and well-proportioned accommodation throughout. The ground floor comprises a generous living room, a contemporary fitted kitchen/dining room ideal for everyday family life and entertaining, a versatile garden room perfect for use as a home office or additional reception space, and a downstairs cloakroom.

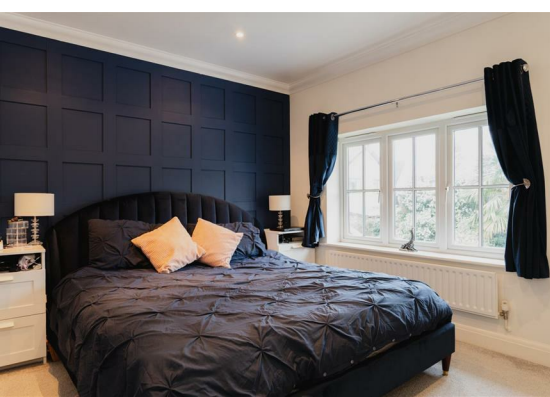
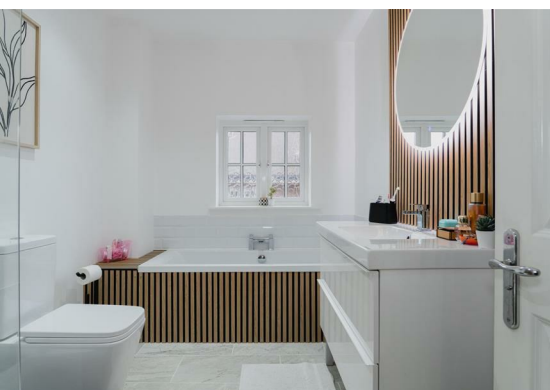
Upstairs, there are three generous double bedrooms, including a superb principal suite with stylish en-suite facilities, along with a modern family bathroom.

Outside, the beautifully landscaped south-facing rear garden enjoys excellent sunlight throughout the day and provides a private and peaceful setting for outdoor dining and relaxation.

Further benefits include a large loft space offering excellent storage potential, an attached double garage with rear access to the garden, driveway parking for multiple vehicles, and an electric vehicle charging point.

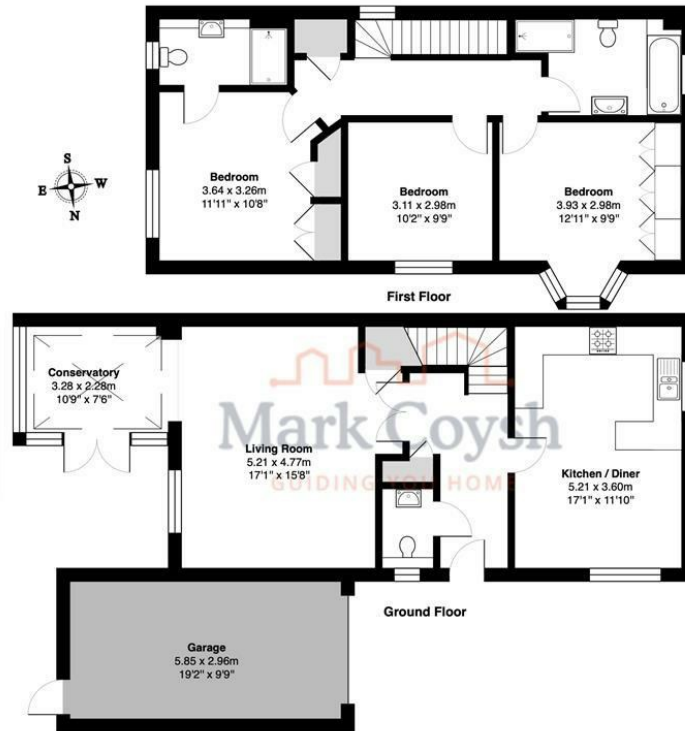
Langley Vale is a popular and friendly community surrounded by open countryside, with immediate access to scenic walks across Epsom Downs – ideal for families, dog owners and outdoor





enthusiasts. The property is conveniently located for Epsom town centre, Ashted Village, Banstead and surrounding areas, all offering a wide range of shops, restaurants, leisure facilities and amenities.

Tattenham Corner station provides direct services to London Victoria and London Bridge, making the location well suited to commuters. The area is also well regarded for its selection of excellent local schools, while the M25 and major road networks provide convenient access to London, Gatwick Airport and the south coast.



Grosvenor Mews, Grosvenor Road, Epsom

Total Area: 142.0 m² ... 1529 ft²

FOR ILLUSTRATIVE PURPOSES ONLY.

Whilst every attempt has been made to ensure the accuracy of the floor plan shown, all measurements, positioning, fixtures, features, fittings and any other data shown are an approximate interpretation for illustrative purposes only and are not to scale.

No responsibility is taken for any error, omission, mis-statement or use of data shown.

The above statement applies to both 'Still Moving London LTD' and the Company or individual displaying this floor plan.

Unauthorised reproduction prohibited.

© Still Moving London LTD (www.stillmoving.london)



Viewing

Please contact our Mark Coysh Office on 01372 303703 if you wish to arrange a viewing appointment for this property or require further information.

These particulars, whilst believed to be accurate are set out as a general outline only for guidance and do not constitute any part of an offer or contract. Intending purchasers should not rely on them as statements of representation of fact, but must satisfy themselves by inspection or otherwise as to their accuracy. No person in this firm's employment has the authority to make or give any representation or warranty in respect of the property.

